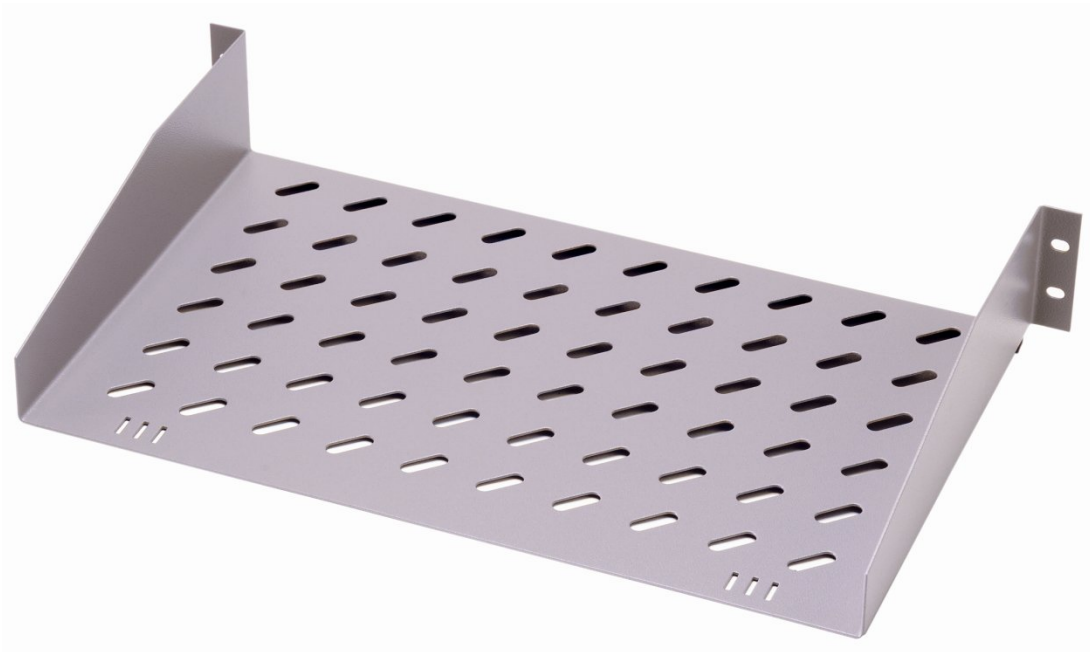


PLATEAU FIXE 2U P:350



FEATURES

19" rack mount Vented
Easy to fix

COMPLIANCES

UL and cUL
Load Carrying Capacity: 25 kg
Surface Treatment : Fosfat coating
Painting : Ral7035 / Ral9005

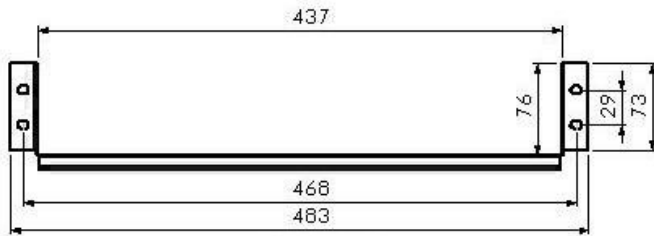
STANDARDS

- *ISO 9001:2000
- *TSE:EN 61587-1 Mechanical Structures For Electronic Equipment - Tests For IEC 60917 And IEC 60297
- *Climatic and Environment:EN 61587-1/4.2,IEC60068-2-1 , IEC60068-2-2 , IEC60068-2-30,
- *Static Mechanical Load Lifting:EN61587-1/5.2.1
- *Static Mechanical Load Stiffness:EN61587-1/5.2.2
- *Dynamic Mechanical Load Vibration and Shock , Impact: EN61587-1/5.3.1,EN61587-1/5.3.3,IEC60068-2-6, IEC60068-2-27,
- *Earth Bond:EN61587-1/6.2
- *Flammability:EN61587-1/6.3

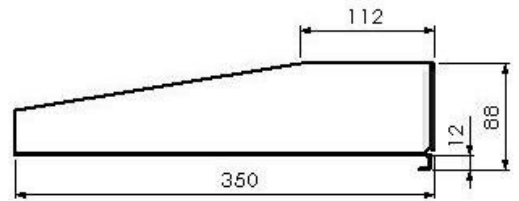
Material Definition and Properties , Thicknesses and Shipment Configuration

Part Definition	Material thickness	Material definition & properties	Shipment Configuration
2U 19" Rack Mount Shelf	1,5 mm	DIN EN 10130 - 99 EREGLI DC-01 6112 CRS	1ea.

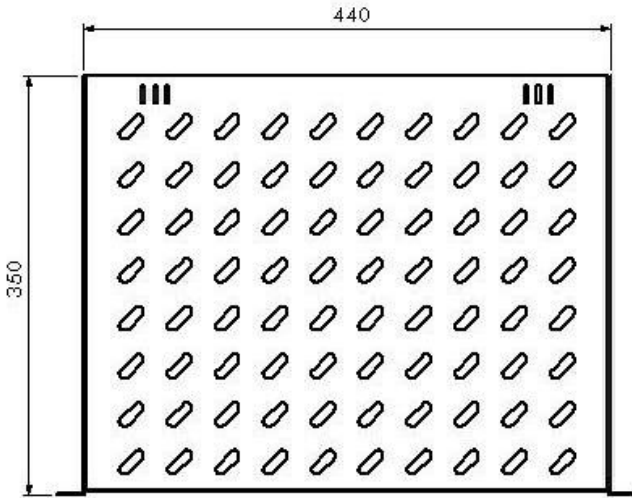
PLATEAU FIXE 2U P:380



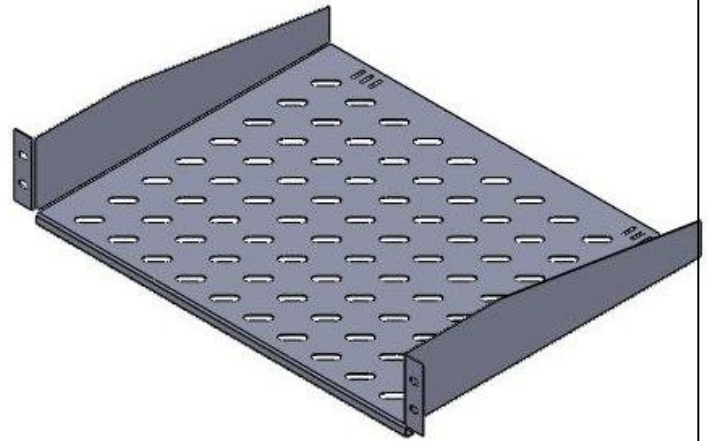
Front View



Side View



Top View



Iso View

2U 19" Rack Mount Shelves

MODEL NAME	Product Definition	Dimensions (wxdxh) mm
RAP-PL-F-350-2-B	2U 19" Rack Mount Shelf depth=350 mm	483x370x88

Shipping Data

MODEL NAME	quantity	Shipping Dimension (palette) WxHxD	Net Weight (kg)	Gross Weight (kg)
RAP-PL-F-350-2-B	4	545x425x400	8,92	11,00