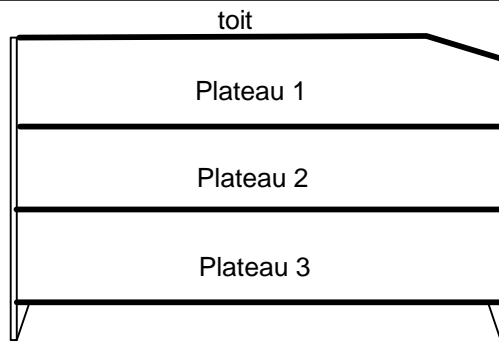
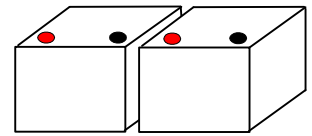


Dimensions en mm	
Hauteur	1266
Largeur	1147
Profondeur	833
H. entre plateau	285
Plateau	780x1040
BATTERIE 12V 100AH Y/10	
BATTERIE 12V 65AH Y/10	



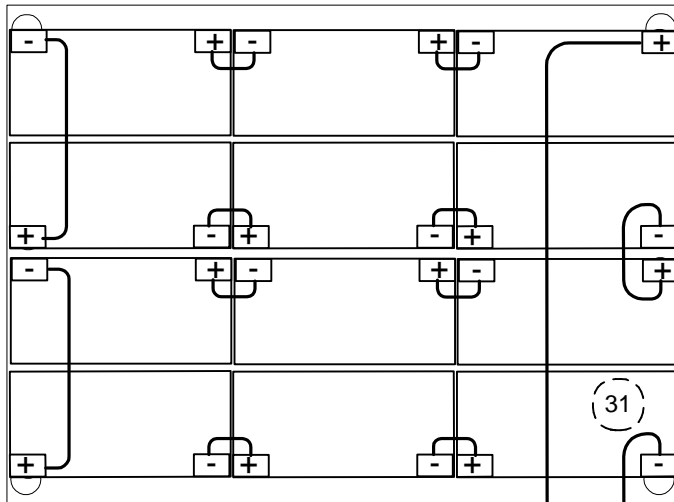
Disposition des batteries :



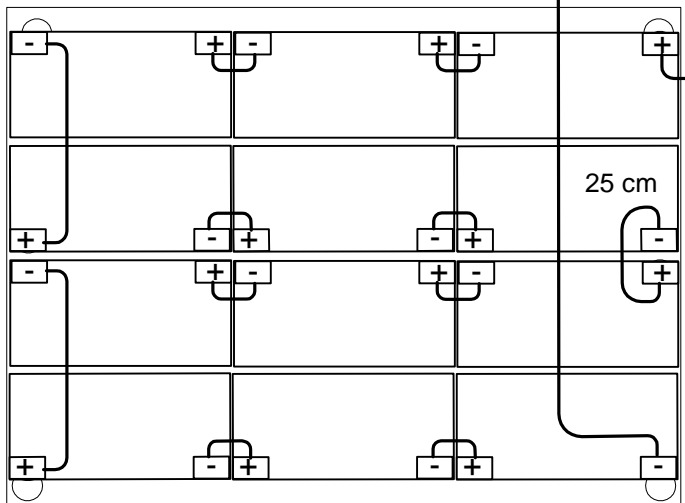
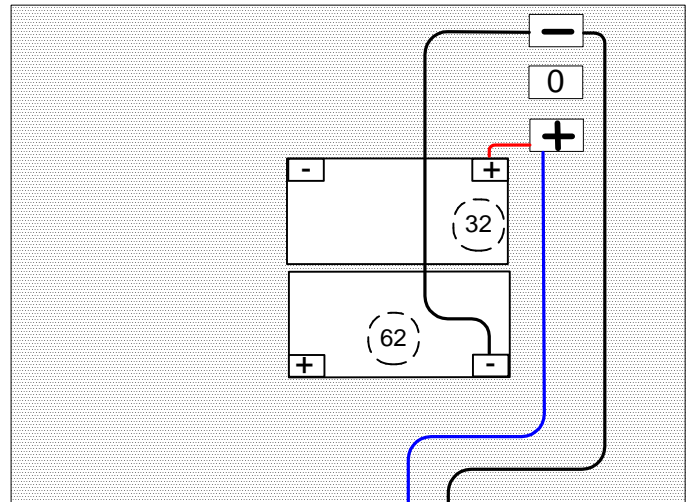
echelle 1/12

Armoire 1

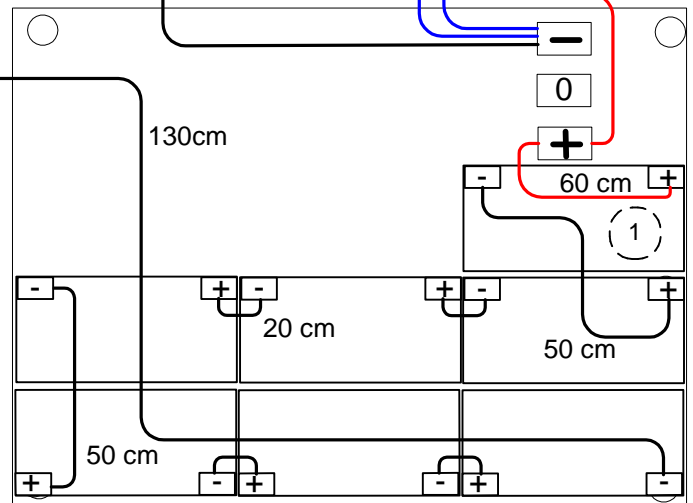
Armoire 2



Plateau 1



Plateau 2



Plateau 3

Câble allant vers les batteries connectés en haut des fusibles

Câble allant vers les onduleurs connectés en bas des fusibles

100KVA	35mm ²	160A	180 cm	M6	M8	2	
80KVA	35mm ²	160A	130cm	M6	M6	4	
60KVA	25 mm ²	100A	60cm	M6	M8	2	
40KVA	16 mm ²	80 A	50 cm	M6	M6	12	
30KVA	16 mm ²	63A	25 cm	M6	M6	4	
20KVA	10 mm ²	50 A	20 cm	M6	M6	40	
10 - 15 KVA	6 mm ²	25A					
Puissance	Section	Fusible	Cable	Cosse		Quantité	OK

Visa: MCO

2x V33 31 x 12V 65-100AH

09/02/2012

